



# BEMO-COFRA

Brazil-Europe Monitoring and Control Frameworks

Issue #3 - Published by the BEMO-COFRA Project – October, 2013

## Efficient management of complex, large-scale production systems

**BEMO-COFRA is developing a software platform for monitoring and control of large-scale production systems which can meet the market demands for flexible and holistic production in the manufacturing industries**

- There is an increasing need for flexibility in production activities that can adapt to a continuously changing world market. The manufacturing industries require processes that are more flexible and that can better adapt to shifting consumption patterns. The key issue to survive in a worldwide competition will be the capacity of putting new and innovative products on the market and enhancing system flexibility through advanced ICT tools and architectures, explains Eduardo Souto, Associate Professor at the Institute of Computing of the Federal University of Amazonas.

- In this context, BEMO-COFRA is developing an innovative distributed framework which allows networked monitoring and control of large-scale complex systems by integrating heterogeneous smart objects, legacy devices and sub-systems, cooperating to support holistic management and to achieve overall systems' efficiency with respect to energy and raw materials, Eduardo Souto continues.

Today, manufacturing systems often suffer from a lack of flexibility and integration. There is limited integration between the processes involved in the engineering and management of the plants; difficulties in providing flexibility in the production plant to accommodate for continuously varying product mixes and volumes as well as a lack of scalability, reconfigurability and manufacturing efficiency.

- Addressing these main weaknesses through the creation of specific scenarios and requirements, makes it possible for us to provide generic solutions which can help resolve the weaknesses and thereby enhance overall efficiency and strengthen the competitiveness, Eduardo Souto explains.

### Complex management made easier online

To integrate, monitor and control the many devices and sub-systems in a complex production environment, the BEMO-COFRA framework provides a middleware which is able to expose the capabilities of smart objects, legacy devices and sub-systems and transform them into web services. Syntactic and semantic interoperability is made available among coexisting technologies in the overall monitoring and control framework. WSA (Wireless Sensors and Actor Networks) devices, legacy sub-systems and other devices will thus be able to interact and cooperate, orchestrated by a manager in charge of enforcing a distributed logic with the overall monitoring and control network.

To support the adoption of large-scale networks composed of heterogeneous smart objects with sensing and actuating capabilities, devices are integrated through heterogeneous wireless communication technologies such as WiFi, Bluetooth or IEEE 802.15.4-based technologies.

- The WSAs to be developed by BEMO-COFRA will also feature the flexibility, reliability, availability and manageability characteristics that are of paramount importance to support dependable operations in harsh environments, Eduardo Souto explains.

The achievements are demonstrated by deploying the BEMO-COFRA framework in a car manufacturing plant provided by partner COMAU and the FIAT Group where dependability of the system is of utmost importance and where a very large number of devices, systems and WSA devices interact and actively cooperate with each other to enable a very accurate observation of production processes.

In the next sections, Eduardo Souto explains the basic vision of BEMO-COFRA and its functionality.

## In this issue

- Efficient management of complex, large-scale production systems
- Development tool for designing applications
- BEMO-COFRA at ETFA 2013

## Meet BEMO-COFRA:

### Brazil Automation 2013

5-7 November, Sao Paulo, Brazil  
Brazil Automation ISA 2013 is a leading initiative in South America and among the five largest automation sector events in the Americas. BEMO-COFRA partners have produced an article with the title 'A Framework for Monitoring and Control of Multiple Devices in a Plant Floor' which will be presented by partner iVision at the conference.

### ICT 2013 Conference and Exhibition

6-8 November, Vilnius, Lithuania  
More than 4000 researchers, innovators, entrepreneurs, industry representatives, young people and politicians are expected at the event in Vilnius which focuses on Horizon 2020 - the EU's Framework Programme for Research and Innovation for 2014-2020. The exhibition showcases the latest findings in advanced research and technologies as well as ICT products just coming to market. You can find BEMO-COFRA at stand 4B15 in Hall 4: The Industry and Business for Tomorrow and see how the energy monitoring of an automotive production process can optimise step-by-step operations.

## Deliverables released:

A selection of deliverables recently completed:

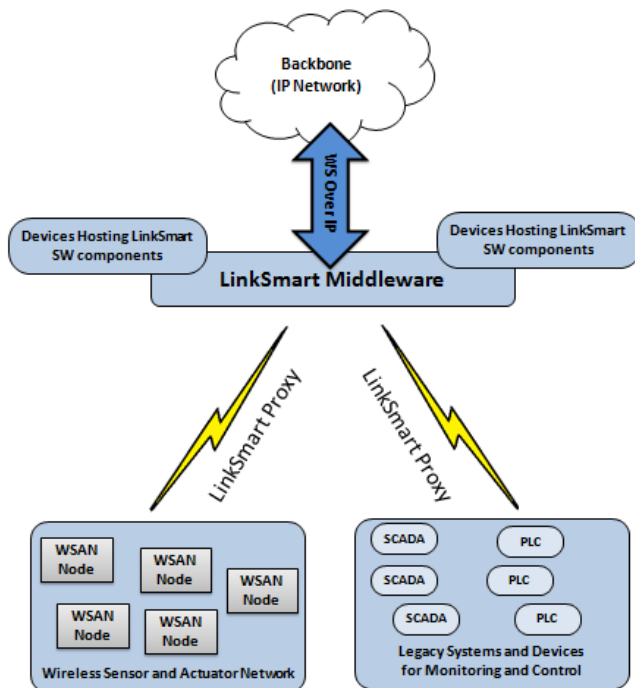
- D2.3 Validation Framework (Restricted)
- D2.4 Change request and re-engineering report (Restricted)
- D3.2 Architectural Design Specification (Restricted)
- D3.3 Traffic Modelling for Industrial Applications (Restricted)
- D4.1 Dependability Features in Single and Multi-Radio WSAs (Restricted)
- D5.1.1 Initial Infrastructure for Distributed Control Logic (Public)
- D5.2.1 Initial Administration Tool v1\_0 (Public)
- D5.3.1 Initial LinkSmart-enabled Environment (Public)
- D6.1 IoT-enabled legacy devices for

## Vision and conceptual approach

The BEMO-COFRA framework addresses both technological aspects and user needs to promote a software platform for monitoring and control which is able to provide:

1. Integration of legacy devices, systems and different wireless heterogeneous technologies into an overall framework, and turn them into useful, value-added business services or service components.
2. Novel mechanisms to enforce dependability in WSANs operating in harsh environments and serving heterogeneous application constraints by means of context awareness, self-configuration and self-adaptation capabilities.
3. Adopting distributed and decentralised approaches to provide WSANs with scalable monitoring, control and self-diagnosis capabilities.
4. Introducing a Service Oriented Architecture (SOA) and a middleware that, by exposing smart objects capabilities as web services, make it possible for the innovative WSAN to be developed within the project to cooperate with legacy devices and systems.

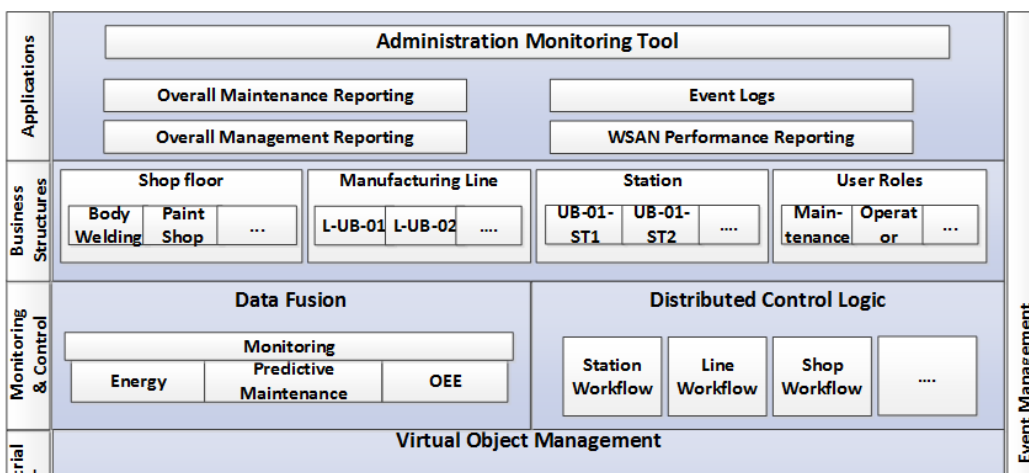
The above BEMO-COFRA achievements clearly pave the way to an innovative framework supporting networked monitoring and control systems in different application domains, as shown in the figure below.



The overall BEMO-COFRA system represents a comprehensive, distributive framework comprising a middleware layer, large WSANs, PLC and SCADA systems, and not least computers and powerful devices being deployed in manufacturing plants.

### The BEMO-COFRA architecture

The BEMO-COFRA platform is proposed as service-oriented, consisting of five loosely coupled core layers and their respective components. Each of the layers and their components presented in the figure below are responsible for their respective part of the overall functionality.



production monitoring (public)

- D6.2 WSN integrated platform v1.0 (Restricted)

- D6.3.Data Fusion Engine for production monitoring (Restricted)

Public deliverables can be downloaded from the project website after they have been reviewed and approved by the EC:

[www.bemo-cofra.eu](http://www.bemo-cofra.eu)

FORWARD TO A FRIEND

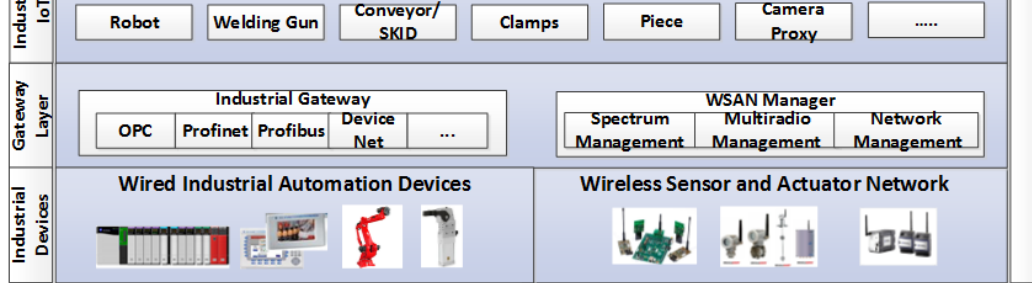
UNSUBSCRIBE



The BEMO-COFRA project is a 30-months EU-Brazil cooperative research project which started in 2011. The project is partly funded by the European Commission under the 7th Framework Programme in the area of EU-Brazil Research and Development cooperation under Grant Agreement no. 288133. The Brazilian funding is provided by CNPq Conselho Nacional de Desenvolvimento Científico e Tecnológico.

Read more at:

[www.bemo-cofra.eu](http://www.bemo-cofra.eu)



## Applications

The BEMO-COFRA application components encompass administration, monitoring and configuration tools and also all user interfaces designed to provide access and generate information based on the environmental data. The application layer includes the tools offered, including:

1. Generation of Overall Maintenance Reporting – This application offers support to the preventive maintenance activities with indications of which resources will soon need attention or reach their final life cycle.
2. Access Event Log – This interface allows the access to system events available in the BEMO-COFRA environment and generated by all integrated resources.
3. Generation of WSAN Performance Reporting – This unit generates status reports from all WSAN monitored devices for control and evaluation proposes. It is a helpful tool for the system administrators.
4. Business Intelligence Management – This application transforms raw data into meaningful and useful information for business purposes to help identify and develop new opportunities. It supports the implementation of an effective strategy thereby being able to provide a competitive market advantage and long-term stability, offering historical, current and predictive views of business operations.

## Core services

The BEMO-COFRA architecture provides a set of core services used to compose the information required by application domains. This composition is done by a service layer which interacts with the application layer to communicate with user-developed applications that want to access and use the services offered in this layer. The following types of components are found in the service layer:

1. Data fusion component. Data fusion is an important component of applications for systems that use correlated data from multiple sources (sensor and other device readings) to determine the state of a system. As the state of the monitored system can change, the general data fusion component should change dynamically based on the current environment and available resources in the system. To achieve this goal, the Data Fusion Component analyses data provided by the lower layers, including industrial IoT and the business structure layer and provides an overview of the manufacturing plant through the semantically enriched monitoring reports.
2. Distributed Control Logic component. The BEMO-COFRA architecture defines a Distributed Control Logic component aimed at effectively orchestrating the application-oriented monitoring and control services operated within the overall system. The services provided by this component enable monitoring and control of the overall networked community of cooperating objects composed by WSANs and different sub-systems. The control logic monitors the devices distributed on the line and controls them, indicating their correct time to act or not. The control logic system proposed is composed by sensors, actuators and PLCs (Programmable Logic Controllers), which control the other devices. The flow of the production is mapped regarding the correct station sequence, order of activities, devices activation and status and then the logic is inserted on the PLC. Features as alarms and line stop must be predicted for the control logic, which is based on the [Poka-Yoke methodology](#).
3. Virtual Object Manager. The Virtual Object Manager component provides virtual objects for the Data Fusion and Distributed Control Logic components. The virtual objects are logical devices built from resources of the wired industrial automation devices and wireless sensor and actuator networks present in the manufacturing plant, e.g., a welding robot with wireless power consumption sensor could be represented by a virtual object by the name 'energy-aware welding robot'.

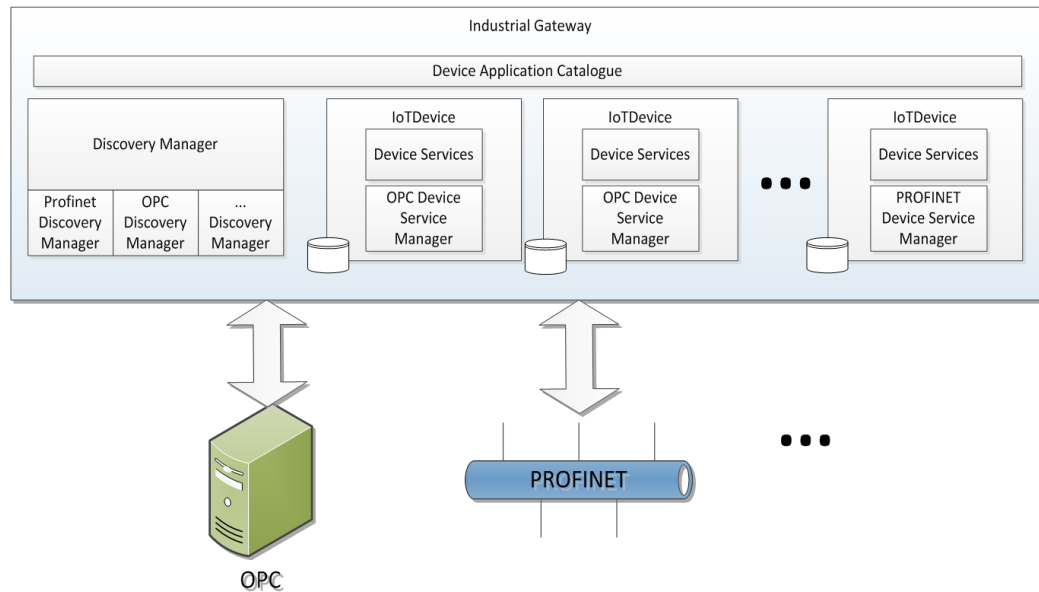
## Virtual entities

A manufacturing scenario can be identified with that of a generic user that needs to interact with (possibly remote) physical entities such as robots, PLCs, clamps, skids, and so on. In this scenario, people (e.g., operator and maintenance crews) or some artifact (e.g., a service or application) that have an interest in interacting with a physical entity can do it through the virtual entities in the BEMO-COFRA architecture.

When the interactions occur directly, e.g., by moving a robot from A to B manually, the BEMO-COFRA architecture allows a mapping between physical and virtual entities, providing the user a better capacity interaction with the physical environment. From the Virtualization Layer, the user is able to interact indirectly or mediated, i.e., by calling a service that will either give information about the physical entity or actuate it. The virtual entities are representations of a set of properties and parameters of the physical entity. This means that changes that affect the virtual entity could manifest themselves in the physical entity.

## Industrial gateways

The industrial gateway component is responsible for exposing functionality from wired industrial automation devices. This includes everything from simple sensors to more advanced devices such as PLCs and robot controllers. The following figure depicts a functional view of the industrial gateway layer, including a device application catalogue, discover managers and IoTDevices. Each of the components is described in detail below:



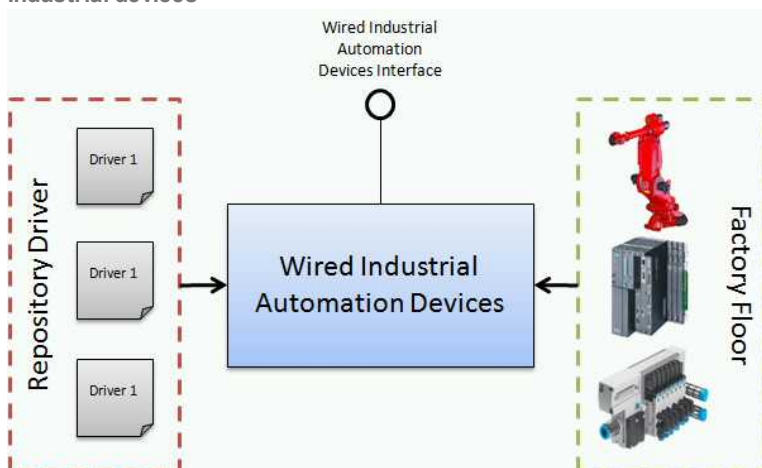
1. IoTDevice - An IoTDevice is a combination of a Device Service Manager and Device Services created by the Discovery Manager. The IoTDevice is the interface that is shown to the rest of the system to interact with the devices. In addition to this, the IoTDevice has local storage that can be used to log sensor readings over a long time.

2. Device Service Manager - The Device Service Manager acts as the driver for communicating with devices using a certain protocol. For each protocol that is used a specific Device Service Manager manages the communication.

3. Device Services - The Device Services component provides the interface to the device with both properties and methods. For each device type there needs to be a specific Device Service component. For instance, a thermometer device can implement the property *currentTemperature*. Devices that are more complex can include more sophisticated methods in their Device Services.

4. Device Application Catalogue - The Device Application Catalogue component provides a catalogue of all known IoTDevices in the Industrial Gateway. This is the service that provides a mechanism for searching for different IoTDevices in the gateway. It also contains meta-information with regards to the IoTDevices such as device type, services offered, status etc.

#### Industrial devices



The industrial device component is responsible for direct interaction between all components existing in an electronics factory floor and should be controlled by the architecture. The component "Wired Industrial Automation Devices" is responsible for tracking events of devices and send information such as the upper layers Gateway Layer. Importantly, this layer is responsible only for devices with a wired interface whereas wireless interface devices are controlled by the component "Wireless sensor and actuator network". This component will be responsible too for the storage and management of the device drivers.

In the factory floor, a multitude of devices and components that compose the factory scenario are found.

Related deliverable: [D3.1 Robotics and Sensor Integration](#)

# Development tool for designing applications

## In BEMO-COFRA a development tool is created to make it easier for developers to design applications

Data delivered by the sensors are often not useful without knowing the context of the data: Which objects are being measured, what properties of the objects are represented and when are the measurements taken? This contextual information can be captured from the domain model of the application which is usually done by the software architects when the application is designed.

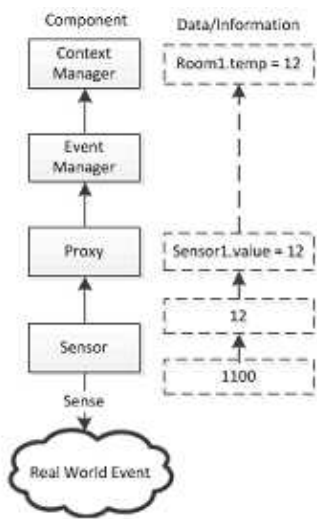
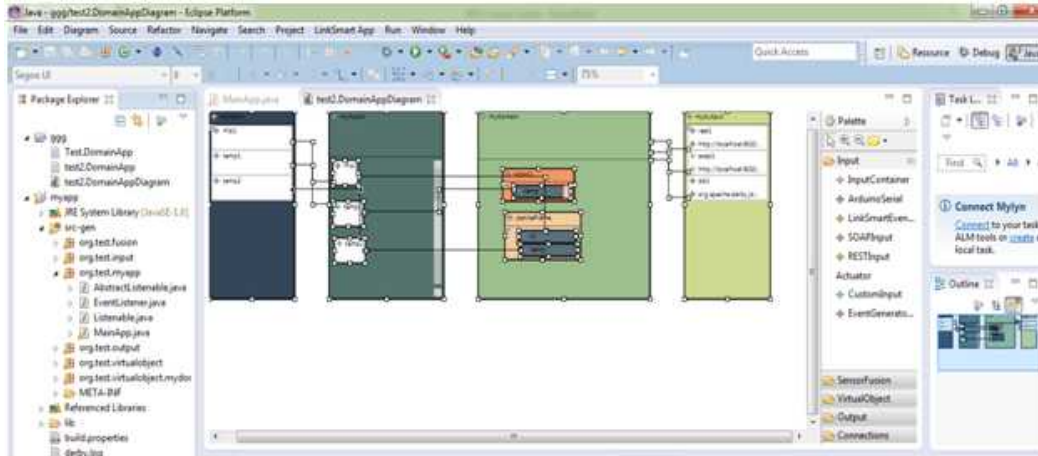


Figure 1: Abstraction of Sensor Data

BEMO-COFRA partners are developing a tool which can help developers design their applications by generating parts of the implementation code automatically, particularly the code that deals with data acquisition and provisioning so that the developers can move their focus to the business logic.

This approach is called model driven approach. With this approach, developers are supported with a tool to wire up BEMO-COFRA modules without having to know the technical details of the modules. After the model is created, it generates java code that encapsulates the complexity of data acquisition and provisioning. The generated java artefacts will encapsulate the sensors and actuators and abstract them as software objects that represent the actual domain objects. As the model contains the correlation between virtual and physical objects, the generated code is able to update the properties of the virtual objects based on the sensor data. This way, developers will get the contextual information without having to know the details of the sensor.

The virtual objects are implemented as java plain objects (POJOs). This has a huge advantage since many frameworks allow developers to annotate java classes to expose the objects into different technology. For instance, in many web service frameworks the Java API for XML Web Services (JAX-WS) specification allows developers to annotate java classes to expose the objects to the web service interface. Another example is the Java Persistence API which allows developers to do mapping between the database schema and the java classes called java beans. Therefore the development tool in BEMO-COFRA opens up different possibilities for developers to extend the code generated by the tool.

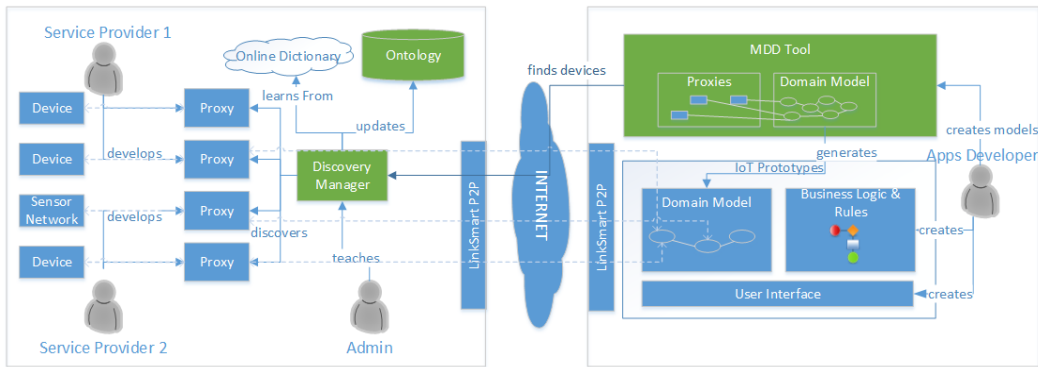


As shown in the figure above, the model driven tool consists of four major blocks including the various input modules, sensor fusion modules, the domain model and the output of the generated code. The input modules are currently implemented with data streams that are connected through a serial port, web services and data that are delivered by the LinkSmart middleware. The sensor fusion modules include several filtering algorithms such as moving average filter and voting algorithm. The domain model is the place where the developers or the architects should define the domain model. The domain model contains the software representation of the real world objects. These objects must have properties, for instance; a room object may have temperature as one of its properties. These properties can then be linked to the sensor fusion modules which in turn are linked to an input. The links will let the tool know how to process data and in the end assign it to the properties of the objects. This means that the virtual objects will always contain the actual values of their properties, delivered by the sensors in the environment.

The output modules specify how the generated code should expose the domain objects. Currently, several implementations exist such as web services that allow applications done in different programming languages to access the values of the virtual objects; console output that prints the values of the virtual objects to the console window which is very useful for developers to identify any programming mistakes; and a database output that allows developers to store the values of the virtual objects in a database.

The plan is to extend the tool by considering a visionary scenario of an Internet of Things (IoT) system as illustrated below. In which service providers run their business by providing new services enabled by IoT.

This scenario follows the trend of IoT brokerage such as Xively. In this scenario, the service providers are required to develop proxies for their sensors and actuators to expose the offered services. The discovery manager will find these proxies using WS-Discovery protocols and extract the service information such as the address, device capabilities and unit of measurements, etc. It will then update the global knowledge about devices in the ontology which in turn will be synchronised among other discovery managers on the LinkSmart through P2P (Peer to Peer) network so that all of them have the same knowledge about the available services. During development, this knowledge will be used by the application developers to find IoT services based on their needs.



The discovery manager uses an online dictionary to detect different synonymous terms used by different service providers to describe their devices. The synonyms and device classification structure is constructed in an ontology allowing developers to find devices based on semantic criteria e.g., subset of a device class and capabilities.

The semantic discovery will also be useful during runtime as the application might search for alternative services when the initially bounded service is not available anymore or when it performs below the quality threshold. Although quality of service is beyond the scope of this research, the discovery manager provides the necessary infrastructure for QoS mechanisms.

As depicted on the right side of the figure, the apps developer will use the Visual context modelling tool to create the application domain model and connect these domain concepts with the device proxies that have been discovered by the discovery manager. The developers could query the discovery manager to find device proxies according to their semantics such as capabilities and functions as well as their synonyms.

[to the top ↑](#)

## BEMO-COFRA at ETFA 2013

**Partners FIT and ISMB had a paper accepted for presentation with the title *Prototyping the Internet of Things Technology for the Future Factory Using Publish-Subscribe Middleware***

The 18th IEE International Conference on Emerging Technologies and Factory Automation is the prime and largest IEEE-sponsored event dedicated to factory automation and emerging technologies in industrial automation. The conference which took place in Cagliari, Italy from 10-13th September was attended by researchers and practitioners from industry and academia all over the world.



Partner ISMB presented the framework for rapid development of monitoring applications in the session on Information Technology in Automation. The presentation was titled Prototyping the Internet of Things for the Future Factory Using a SOA-based Middleware and Reliable WSNs.

[Visit the ETFA website](#)

The paper will be published soon by the electronic journal [IEEE explore](#)

[to the top](#) ↑

You're receiving this new sletter because you have been in contact with one or more of the BEMO-COFRA partners.

We thought you might be interested in following the progress of the project.

Copyright the BEMO-COFRA team © 2013 - Please feel free to quote the content in this new sletter.

Please also see our [Legal Notice](#) for disclaimers and rights.

Having trouble reading this? [View it in your browser](#). Not interested? [Unsubscribe](#) instantly.